



### ■ Features

- ROHS Compliant
- High power rating
- High rejection

### ■ Electrical Specifications

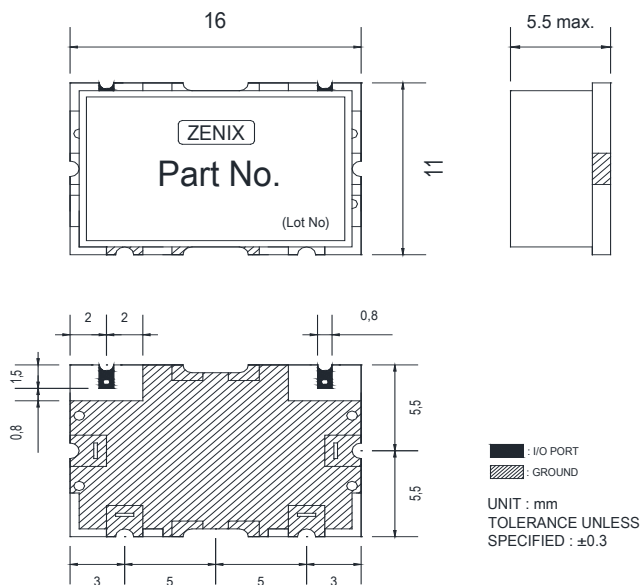
Parameter	Frequency (MHz)	Min.	Typ.	Max.	Unit
Cut Off frequency	200	-	200	-	MHz
Bandwidth	-	100	-	200	MHz
Insertion Loss	100 ~ 200	-	0.5	1.0	dB
Ripple		-	-	-	dB
Return Loss		16.0	18.0	-	dB
Group Delay		-	-	-	ns
Group Delay Variation		-	-	-	ns
Attenuation	450~650	50.0	-	-	dB
	-	-	-	-	dB
	-	-	-	-	dB
	-	-	-	-	dB
	-	-	-	-	dB

### ■ Maximum Ratings

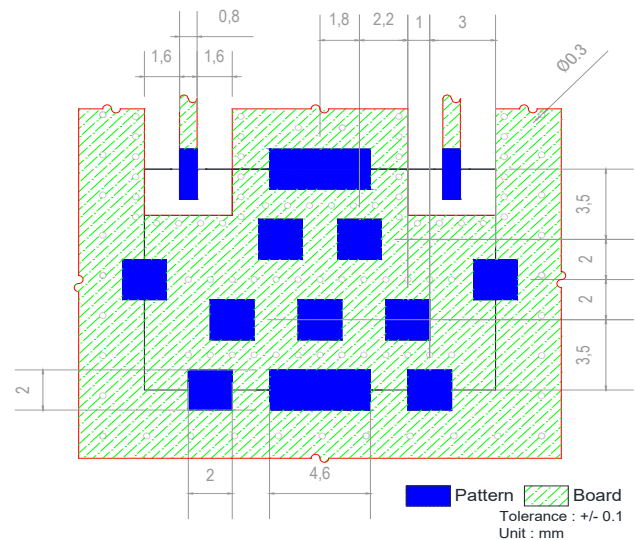
Input Power Handling	3Watt max.
Operating Temperature	-30°C to 70°C
Storage Temperature	-40°C to 95°C

• Permanent damage may occur if any of these limits are exceeded.

### ■ Dimension



### ■ PCB Layout



## Typical Performance Data at 25°C

- Insertion Loss , Attenuation , Return Loss

