



▣ Features

- ROHS Compliant
- High power rating
- High rejection

▣ Electrical Specifications

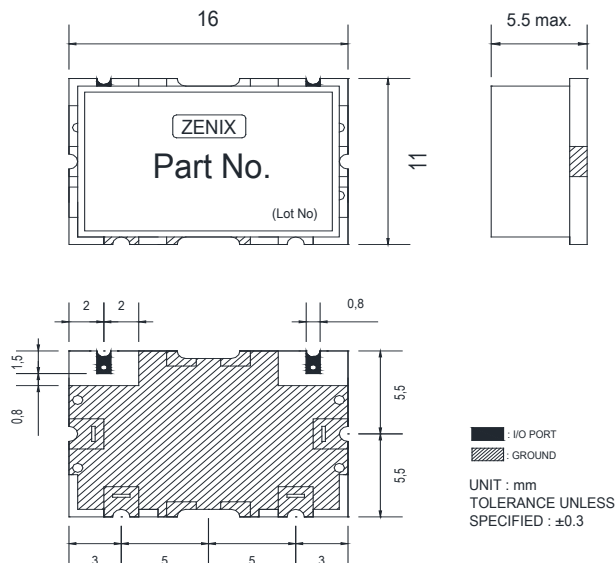
Parameter	Frequency (MHz)	Min.	Typ.	Max.	Unit
Center frequency	638.5	-	638.5	-	MHz
Bandwidth	87	595	-	682	MHz
Insertion Loss	595 ~ 682	-	2.0	3.0	dB
Ripple		-	0.5	1.0	dB
Return Loss		16.0	18.0	-	dB
Group Delay		-	-	-	ns
Group Delay Variation		-	-	-	ns
Attenuation	118~205	25.0	-	-	dBc
	800	25.0	-	-	dBc
	918~1005	45.0	-	-	dBc
	-	-	-	-	dB
	-	-	-	-	dB

▣ Maximum Ratings

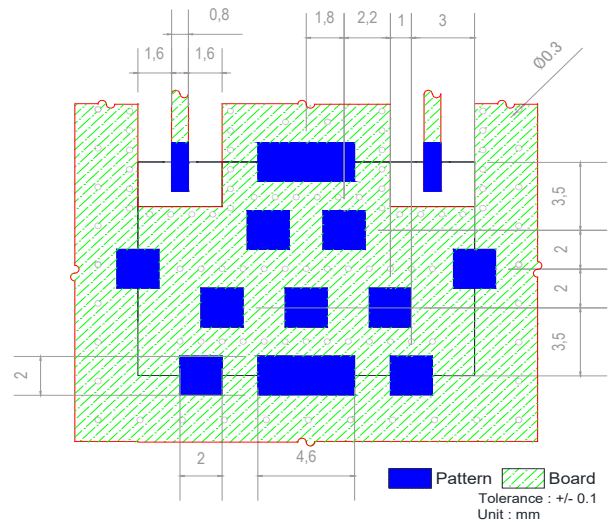
Input Power Handling	3Watt max.
Operating Temperature	-30°C to 70°C
Storage Temperature	-40°C to 95°C

• Permanent damage may occur if any of these limits are exceeded.

▣ Dimension

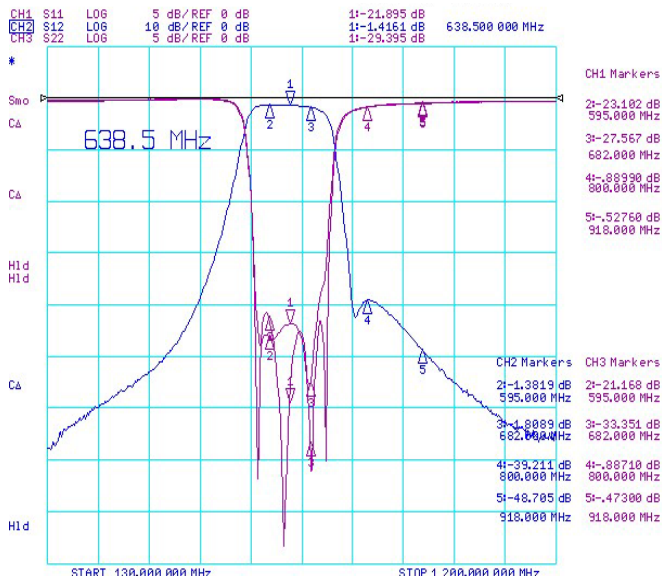


▣ PCB Layout

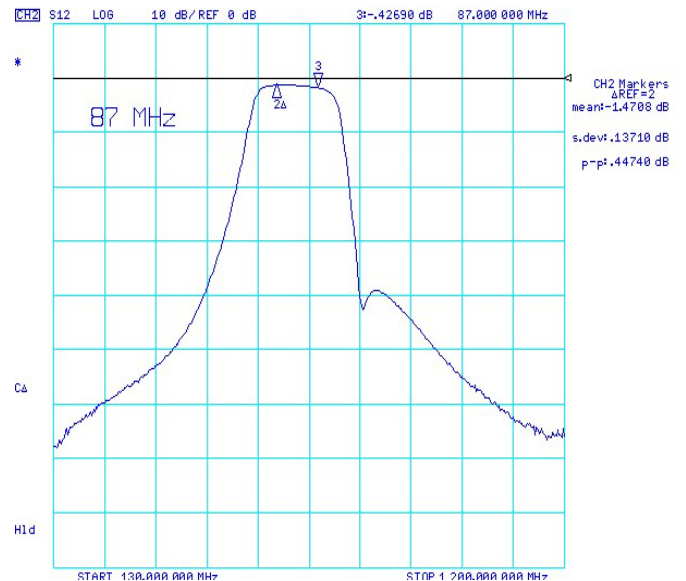


## Typical Performance Data at 25°C

- Insertion Loss, Return Loss, Attenuation, Ripple



- Ripple



- Attenuation

