



Features

- ROHS Compliant
- High power rating
- High rejection

Pricing

| Quantity | Unit Price |
|----------|------------|
| 1 ~ 10 | ₩ 30,000 |
| 11 ~ 24 | ₩ 28,000 |
| 25 ~ 49 | ₩ 25,000 |
| 50 ~ 99 | ₩ 21,000 |
| 100 ~ | ₩ 16,000 |

Electrical Specifications

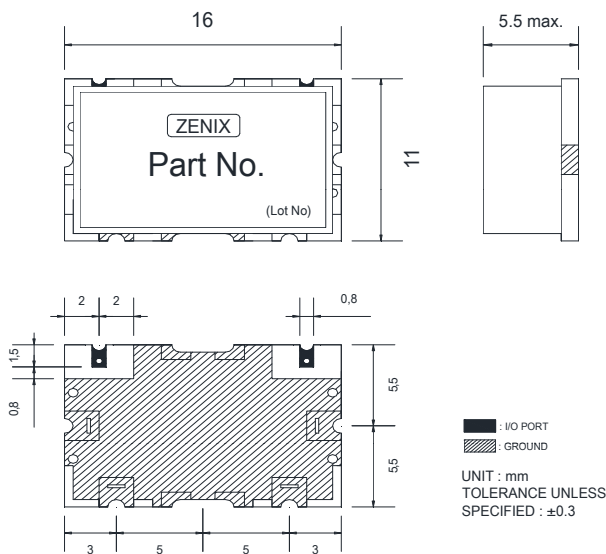
| Parameter | Frequency (MHz) | Min. | Typ. | Max. | Unit |
|-----------------------|-----------------|------|------|------|------|
| Center frequency | 57.5 | - | 57.5 | - | MHz |
| Bandwidth | 20 | 47.5 | - | 67.5 | MHz |
| Insertion Loss | 47.5 ~ 67.5 | - | - | 2.0 | dB |
| Ripple | | - | 0.5 | 1.0 | dB |
| Return Loss | | 16.0 | 18.0 | - | dB |
| Group Delay | | - | - | - | ns |
| Group Delay Variation | | - | - | - | ns |
| Attenuation | 43 | 10.0 | - | - | dBc |
| | 92 ~ 115 | 30.0 | - | - | dBc |
| | - | - | - | - | dB |
| | - | - | - | - | dB |
| | - | - | - | - | dB |

Maximum Ratings

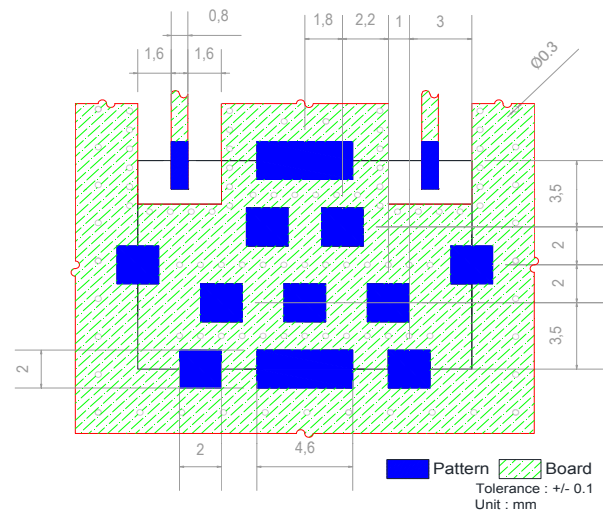
| | |
|-----------------------|---------------|
| Input Power Handling | 3Watt max. |
| Operating Temperature | -30°C to 70°C |
| Storage Temperature | -40°C to 95°C |

• Permanent damage may occur if any of these limits are exceeded.

Dimension

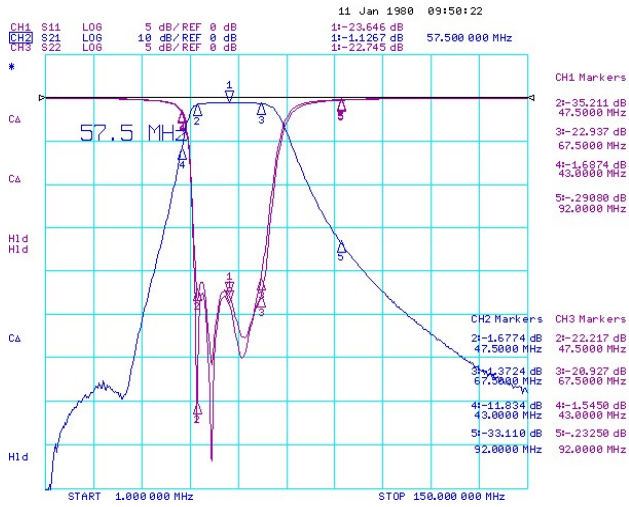


PCB Layout



▣ Typical Performance Data at 25°C

- Insertion Loss, Ripple, Return Loss



- Attenuation

