



▣ Features

- ROHS Compliant
- High power rating
- High rejection

▣ Electrical Specifications

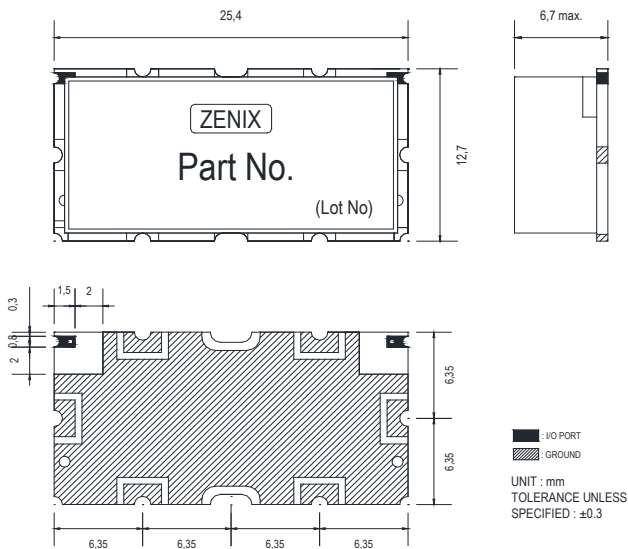
Parameter	Frequency (MHz)	Min.	Typ.	Max.	Unit
Center frequency	375	-	375	-	MHz
Bandwidth	210	270	-	480	MHz
Insertion Loss	270 ~ 480	-	1.5	2.0	dB
Ripple		-	0.8	1.0	dB
Return Loss		16.0	18.0	-	dB
Group Delay		-	-	-	ns
Group Delay Variation		-	-	-	ns
Attenuation		195	40.0	-	-
	555	40.0	-	-	dB
	-	-	-	-	dB
	-	-	-	-	dB
	-	-	-	-	dB

▣ Maximum Ratings

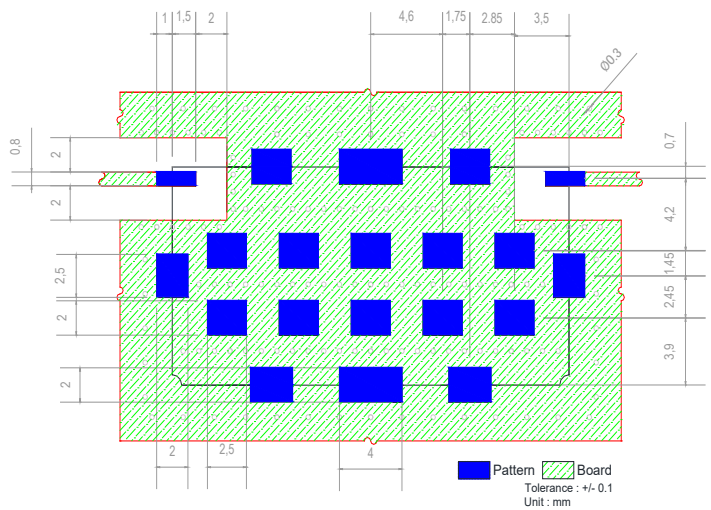
Input Power Handling	3Watt max.
Operating Temperature	-30°C to 70°C
Storage Temperature	-40°C to 95°C

• Permanent damage may occur if any of these limits are exceeded.

▣ Dimension

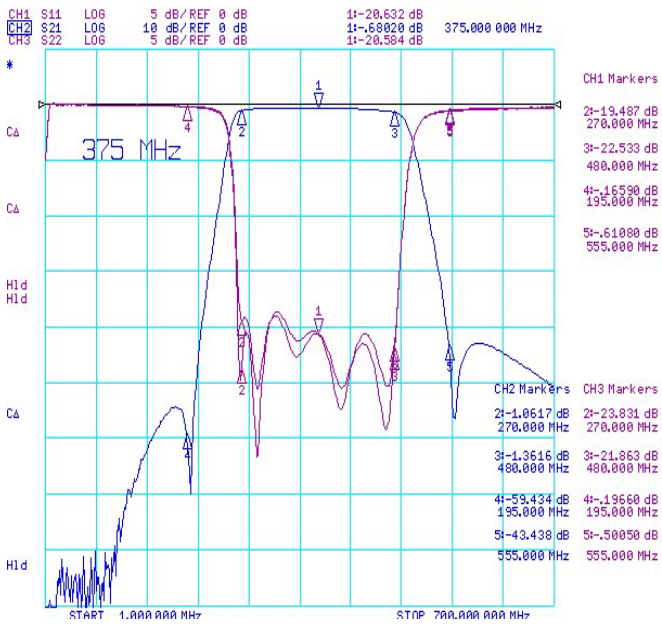


▣ PCB Layout



■ Typical Performance Data at 25°C

- Insertion Loss , Return Loss , Ripple , Attenuation



- Ripple

