



▣ Features

- ROHS Compliant
- High power rating
- High rejection

▣ Pricing

| Quantity | Unit Price |
|----------|------------|
| 1 ~ 10   | ₩ 30,000   |
| 11 ~ 24  | ₩ 28,000   |
| 25 ~ 49  | ₩ 25,000   |
| 50 ~ 99  | ₩ 21,000   |
| 100 ~    | ₩ 16,000   |

▣ Electrical Specifications

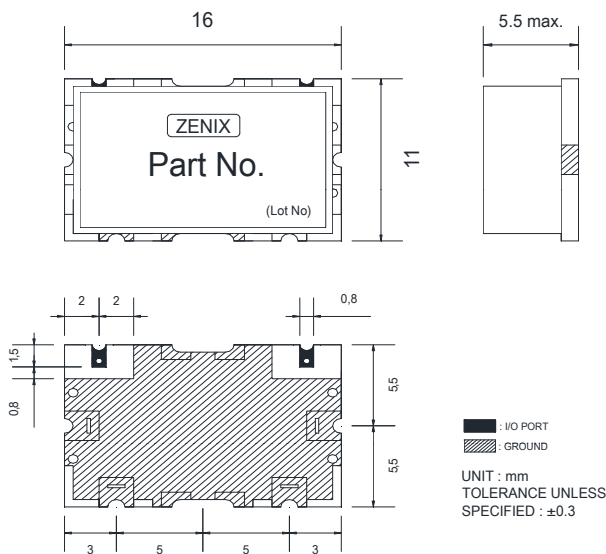
| Parameter             | Frequency (MHz) | Min. | Typ. | Max. | Unit |
|-----------------------|-----------------|------|------|------|------|
| Center frequency      | 345             | -    | 345  | -    | MHz  |
| Bandwidth             | 300             | 195  | -    | 495  | MHz  |
| Insertion Loss        | 195 ~ 495       | -    | 1.0  | 2.0  | dB   |
| Ripple                |                 | -    | 0.3  | 0.5  | dB   |
| Return Loss           |                 | 16.0 | 18.0 | -    | dB   |
| Group Delay           |                 | -    | -    | -    | ns   |
| Group Delay Variation |                 | -    | -    | -    | ns   |
| Attenuation           | 1000            | 40.0 | -    | -    | dBc  |
|                       | -               | -    | -    | -    | dB   |
|                       | -               | -    | -    | -    | dB   |
|                       | -               | -    | -    | -    | dB   |
|                       | -               | -    | -    | -    | dB   |

▣ Maximum Ratings

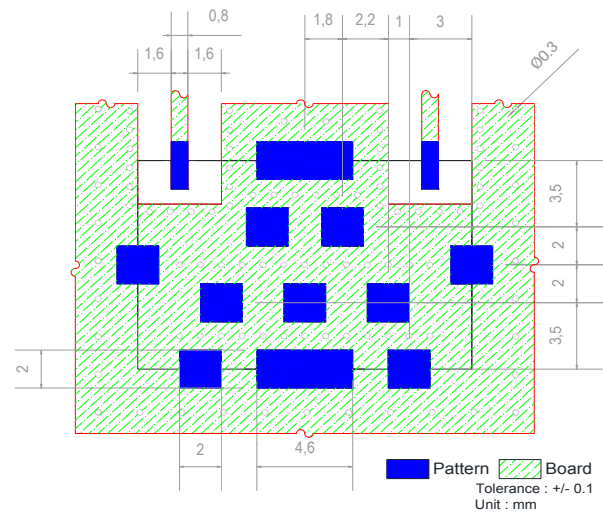
|                       |               |
|-----------------------|---------------|
| Input Power Handling  | 3Watt max.    |
| Operating Temperature | -30°C to 70°C |
| Storage Temperature   | -40°C to 95°C |

• Permanent damage may occur if any of these limits are exceeded.

▣ Dimension



▣ PCB Layout



▣ Typical Performance Data at 25°C

- Insertion Loss , Return Loss , Attenuation , Ripple

