



### Features

- ROHS Compliant
- High power rating
- High rejection

### Pricing

| Quantity | Unit Price |
|----------|------------|
| 1 ~ 10   | ₩ -        |
| 11 ~ 24  | ₩ -        |
| 25 ~ 49  | ₩ -        |
| 50 ~ 99  | ₩ -        |
| 100 ~    | ₩ -        |

### Electrical Specifications

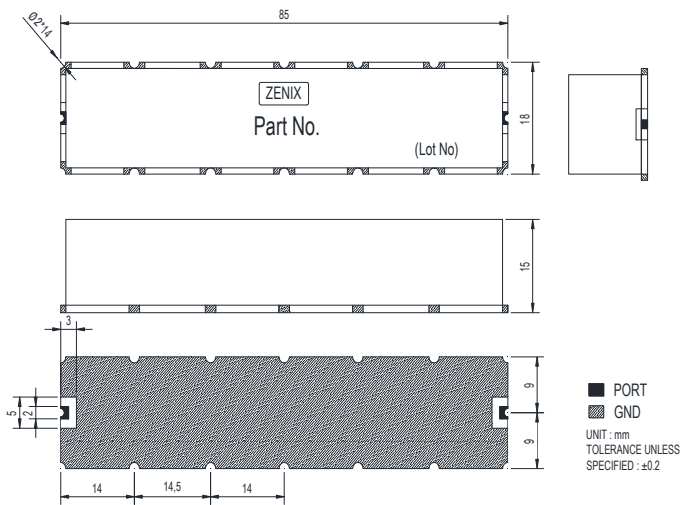
| Parameter             | Frequency (MHz) | Min. | Typ. | Max. | Unit |
|-----------------------|-----------------|------|------|------|------|
| Center frequency      | 255             | -    | 255  | -    | MHz  |
| Bandwidth             | 68              | 221  | -    | 289  | MHz  |
| Insertion Loss        | 221 ~ 289       | -    | 2.0  | 2.5  | dB   |
| Ripple                |                 | -    | 0.7  | 1.0  | dB   |
| Return Loss           |                 | 15.0 | 18.0 | -    | dB   |
| Group Delay           |                 | -    | -    | -    | ns   |
| Group Delay Variation |                 | -    | -    | -    | ns   |
| Attenuation           | 30~88           | 70.0 | -    | -    | dBc  |
|                       | 88~152          | 65.0 | -    | -    | dBc  |
|                       | 340~420         | 65.0 | -    | -    | dBc  |
|                       | 420~512         | 70.0 | -    | -    | dBc  |
|                       | -               | -    | -    | -    | dBc  |

### Maximum Ratings

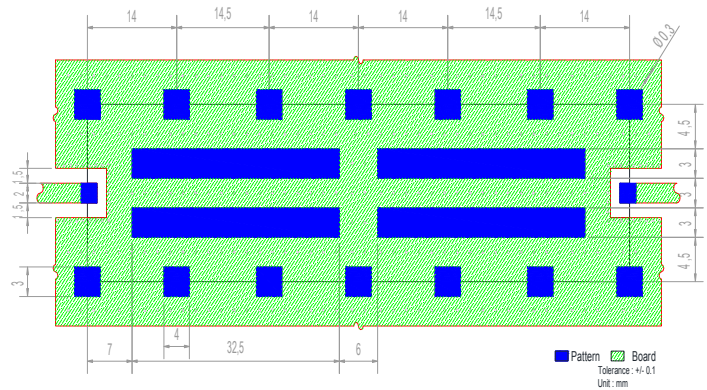
|                       |               |
|-----------------------|---------------|
| Input Power Handling  | 30Watt max.   |
| Operating Temperature | -30°C to 70°C |
| Storage Temperature   | -40°C to 95°C |

• Permanent damage may occur if any of these limits are exceeded.

### Dimension

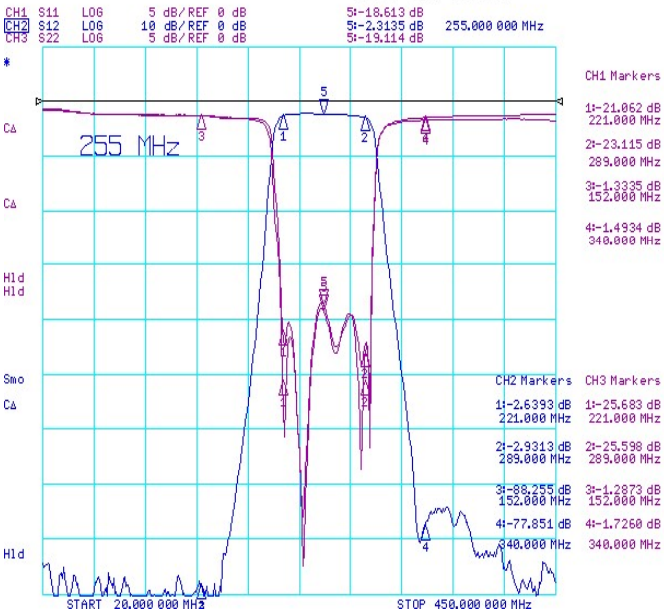


### PCB Layout

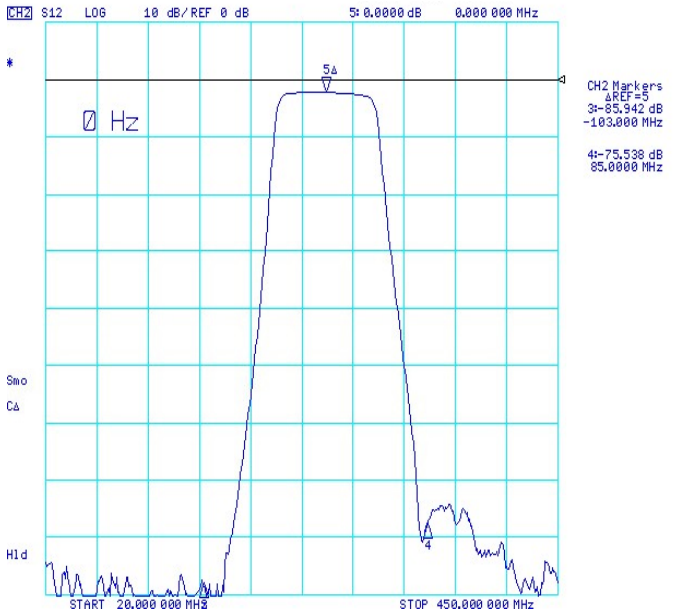


▣ Typical Performance Data at 25°C (※ 첨부 Data는 RF Switch 결합된 Data 입니다.)

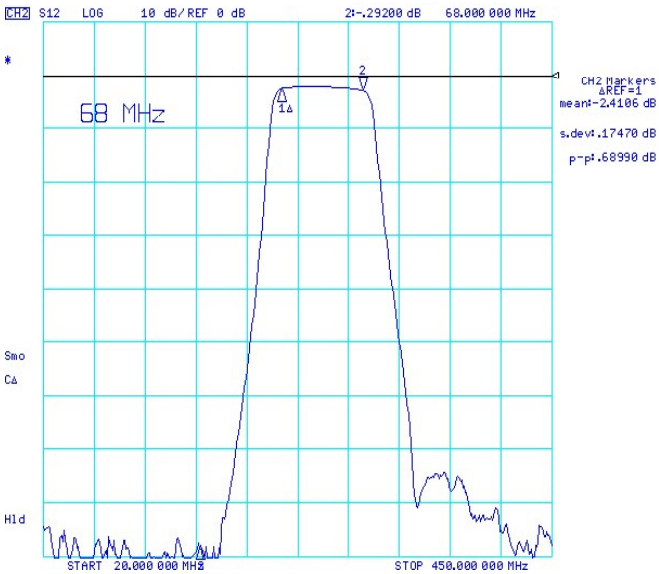
• Insertion Loss , Return Loss



• Attenuation



• Ripple



• Attenuation

