



▣ Features

- ROHS Compliant
- High power rating
- High rejection

▣ Electrical Specifications

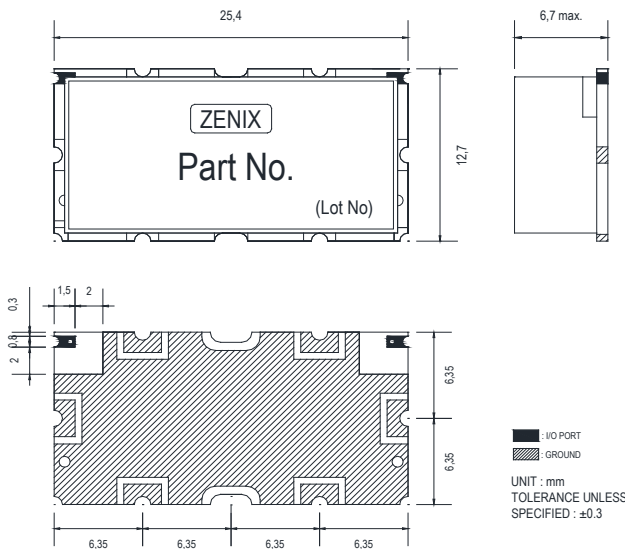
Parameter	Frequency (MHz)	Min.	Typ.	Max.	Unit
Center frequency	240	-	240	-	MHz
Bandwidth	50	215	-	265	MHz
Insertion Loss	215 ~ 265	-	1.5	2.0	dB
Ripple		-	0.3	0.5	dB
Return Loss		16.0	18.0	-	dB
Group Delay		-	-	-	ns
Group Delay Variation		-	-	-	ns
Attenuation		60	70.0	-	-
	150	45.0	-	-	dB
	190	12.0	-	-	dB
	290	12.0	-	-	dB
	700~3000	60.0	-	-	dB

▣ Maximum Ratings

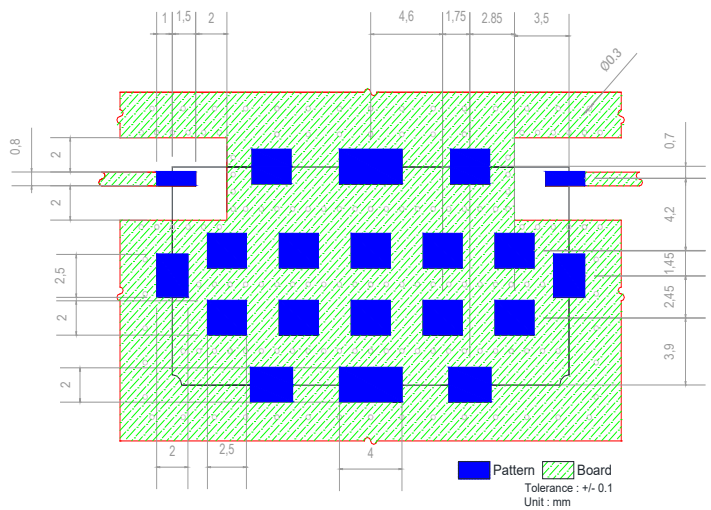
Input Power Handling	3Watt max.
Operating Temperature	-30°C to 70°C
Storage Temperature	-40°C to 95°C

• Permanent damage may occur if any of these limits are exceeded.

▣ Dimension

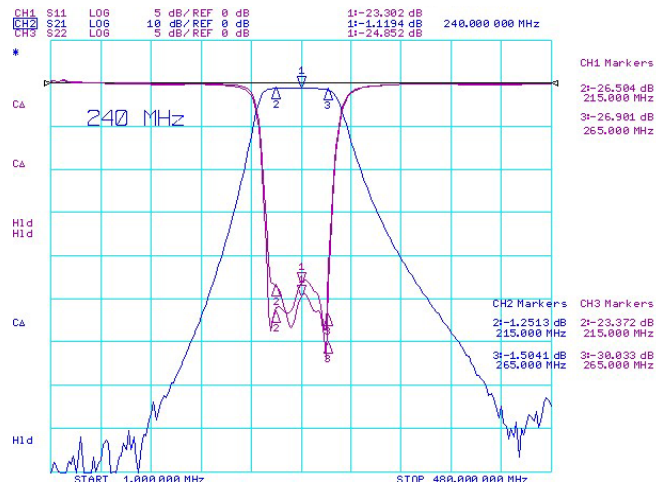


▣ PCB Layout

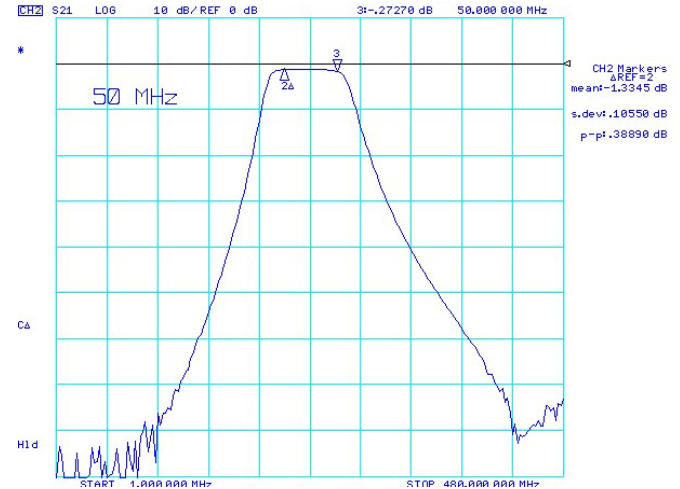


■ Typical Performance Data at 25°C

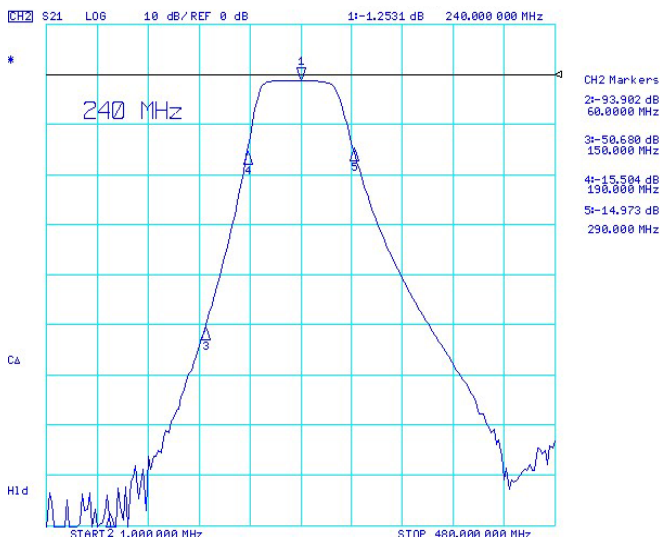
- Insertion Loss, Return Loss, Ripple, Attenuation



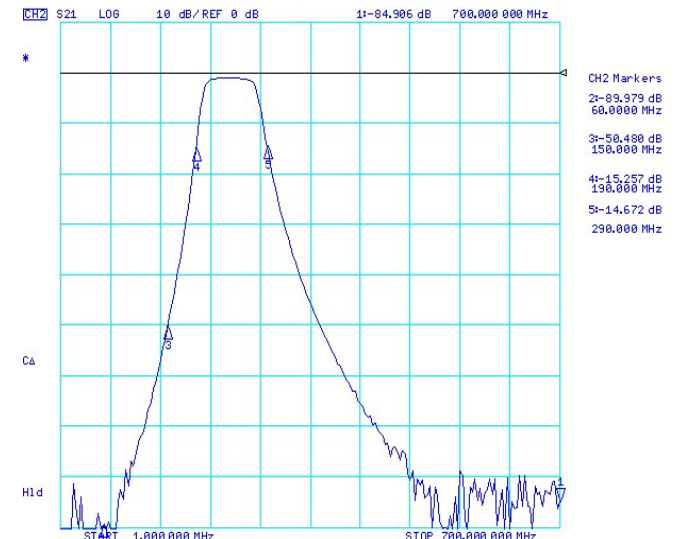
- Ripple



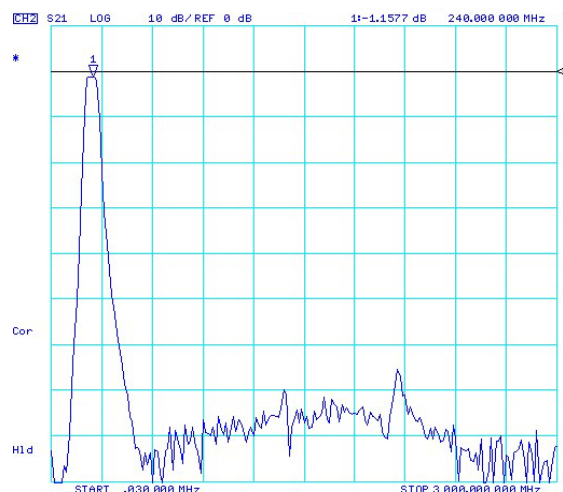
- Attenuation



- Attenuation



- Attenuation



- Attenuation

