



Features

- ROHS Compliant
- High power rating
- High rejection

Electrical Specifications

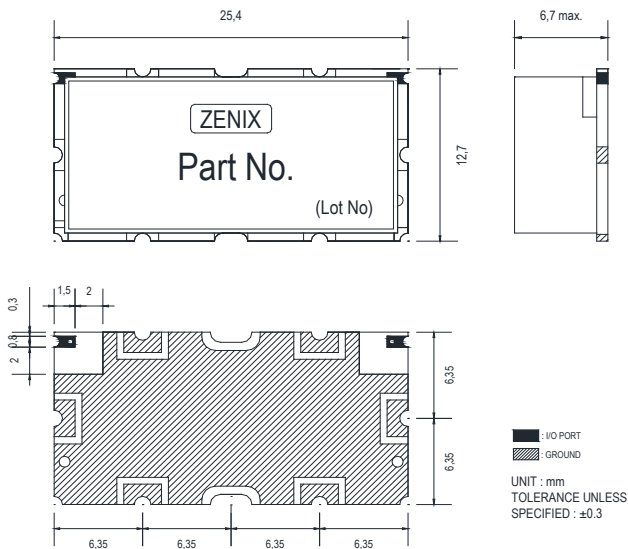
Parameter	Frequency (MHz)	Min.	Typ.	Max.	Unit
Center frequency	216	-	216	-	MHz
Bandwidth	10.0	211	-	221	MHz
Insertion Loss	211 ~ 221	-	-	2.5	dB
Ripple		-	0.3	0.5	dB
Return Loss		16.0	18.0	-	dB
Group Delay		-	-	-	ns
Group Delay Variation		-	-	-	ns
Attenuation		120	50.0	-	-
	160	30.0	-	-	dB
	240	20.0	-	-	dB
	960	70.0	-	-	dB
	960~3000	55.0	-	-	dB

Maximum Ratings

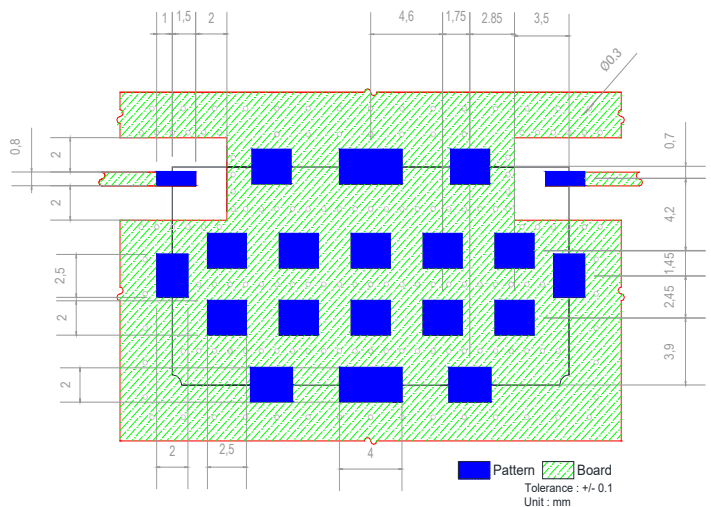
Input Power Handling	3Watt max.
Operating Temperature	-30°C to 70°C
Storage Temperature	-40°C to 95°C

• Permanent damage may occur if any of these limits are exceeded.

Dimension

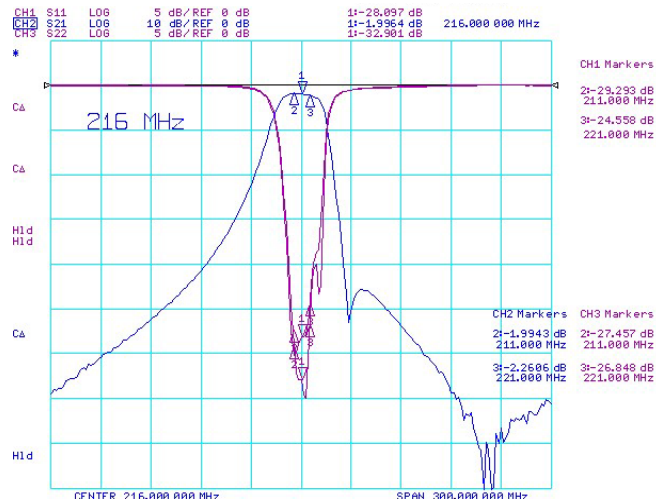


PCB Layout

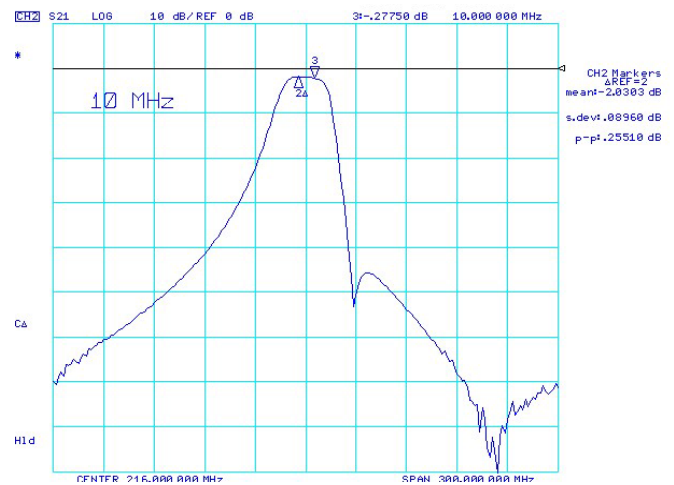


Typical Performance Data at 25°C

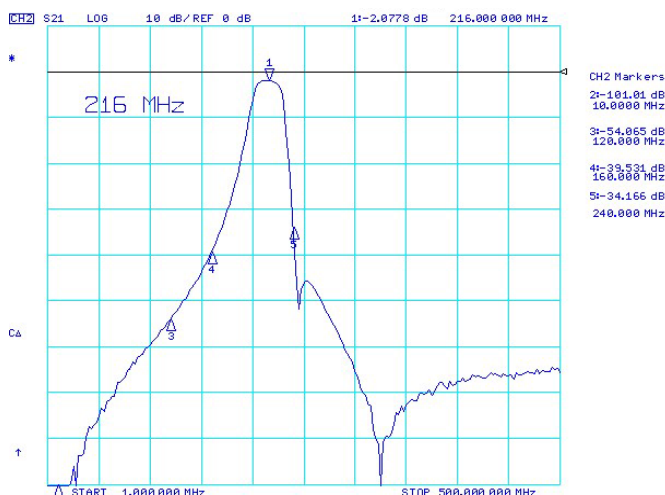
- Insertion Loss, Return Loss, Ripple, Attenuation



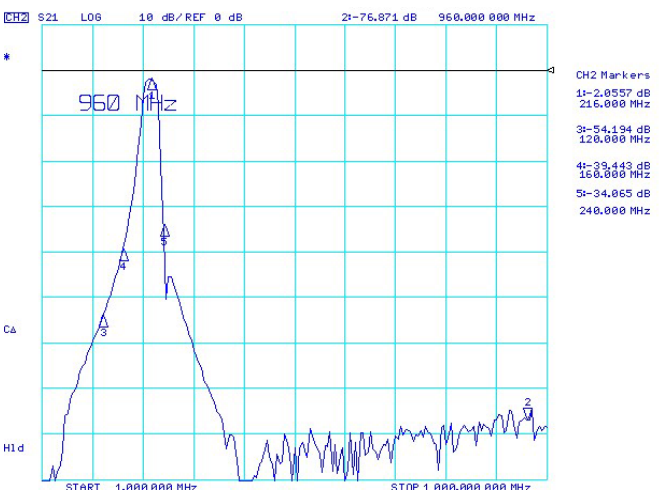
- Ripple



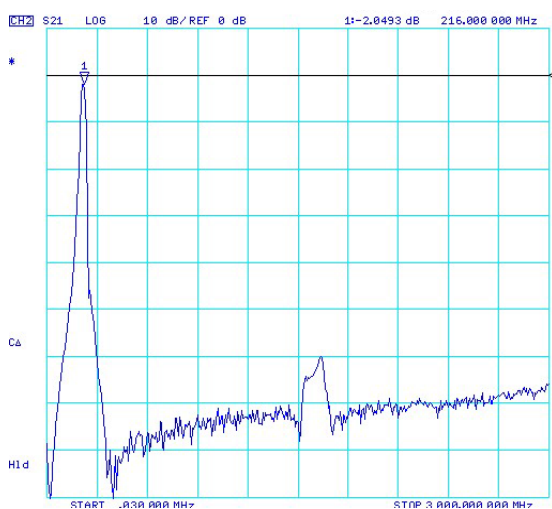
- Attenuation



- Attenuation



- Attenuation



- Attenuation

