



▣ Features

- ROHS Compliant
- High power rating
- High rejection

▣ Electrical Specifications

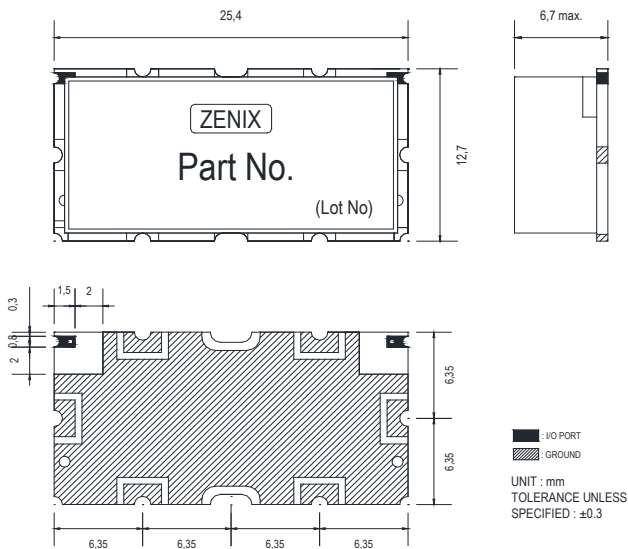
| Parameter             | Frequency (MHz) | Min.   | Typ. | Max. | Unit |
|-----------------------|-----------------|--------|------|------|------|
| Center frequency      | 1103            | -      | 1103 | -    | MHz  |
| Bandwidth             | 252             | 977    | -    | 1229 | MHz  |
| Insertion Loss        | 977 ~ 1229      | -      | 1.5  | 2.0  | dB   |
| Ripple                |                 | -      | 0.3  | 0.5  | dB   |
| Return Loss           |                 | 14.0   | 16.0 | -    | dB   |
| Group Delay           |                 | -      | -    | -    | ns   |
| Group Delay Variation |                 | -      | -    | -    | ns   |
| Attenuation           |                 | DC~800 | 30.0 | -    | -    |
|                       | -               | -      | -    | -    | dB   |
|                       | -               | -      | -    | -    | dB   |
|                       | -               | -      | -    | -    | dB   |
|                       | -               | -      | -    | -    | dB   |

▣ Maximum Ratings

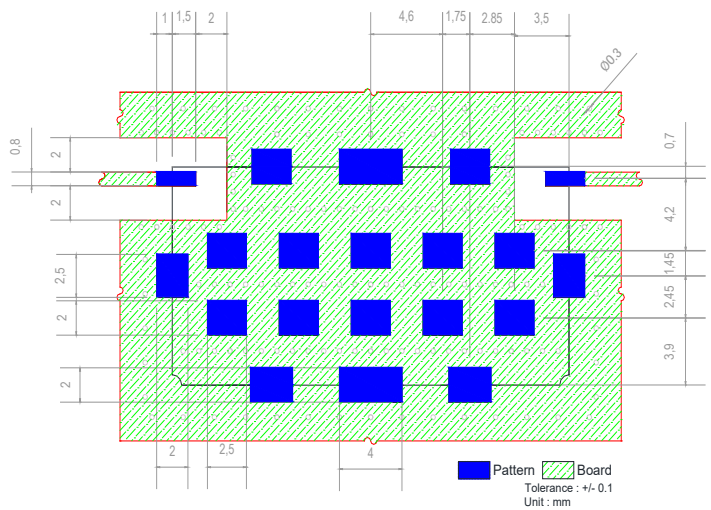
|                       |               |
|-----------------------|---------------|
| Input Power Handling  | 3Watt max.    |
| Operating Temperature | -30°C to 70°C |
| Storage Temperature   | -40°C to 95°C |

• Permanent damage may occur if any of these limits are exceeded.

▣ Dimension



▣ PCB Layout



■ Typical Performance Data at 25°C

- Insertion Loss , Return Loss , Ripple , Attenuation

